



Protect your investment and save money with our Water for Life program.



Extended Warranty



Discounted Replacements



Free Shipping



No Contract

CONTACT US TO LEARN MORE 866-275-2319

waterforlife@aquasana.com



C US

Certified by WQA to NSF/ANSI Standard 58 and CSA B483.1 when used in the AQ-SFRO the reduction for the of the claims specified on the Performance Data Sheet and at www.WQA.org.



For the full list of contaminants filtered, scan to view the Performance Data Sheet on Aquasana.com.

The recommended replacement frequency for the AQ-SFRO-S2 is every 12 months. Use only certified, genuine Aquasana replacement filters for continued contaminant removal and system performance.

Aquasana, Inc.
4343 S. Hamilton Road
Groveport, OH 43125
866-662-6885 USA
877-332-7873 Canada
www.aquasana.com

100368704



AQ-SFRO-S2

Under Sink Water Filter **SmartFlow® Reverse Osmosis Membrane Replacement**

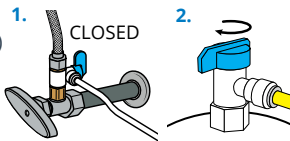
REPLACEMENT

Owner's Manual
For use with AQ-SFRO

INSTALLATION STEPS

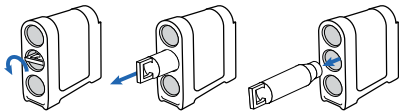
Prepare for Installation

- 1 **Turn the inlet tee valve** to the CLOSED position (1) and close the water tank valve (2). Release pressure from system by turning on dedicated faucet until water stops flowing. Once water stops flowing from then dedicated faucet, turn the faucet off.



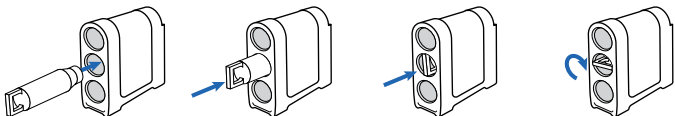
WARNING: Failure to release pressure can result in permanent system damage.

- 2 **Unbox SmartFlow® Membrane** replacement and remove plastic.
- 3 **Remove the SmartFlow® Membrane cartridge** from Stage 2 by turning the handle to the left and pulling out. Discard entire cartridge.



Insert Smartflow® Membrane

- 4 **Insert SmartFlow® Membrane cartridge** into Stage 2 in the system manifold by turning to the right with the handle vertically aligned. The guides on each filter will ensure proper alignment within the system manifold.
- 5 **Once the filter is engaged**, push the filter fully in while rotating 90 degrees to the right.



Scan to view the SmartFlow® Reverse Osmosis filter replacement video.



Flush and Check for Leaks

NOTE: Do not drink flushed water.

- 6 **Turn on COLD water valve** and confirm dedicated faucet is off. While tank refills, carefully inspect for leaks.
- 7 **After the water tank is full**, turn on the dedicated faucet and empty the tank again.
- 8 **Once the water tank is empty**, turn off the dedicated faucet and allow tank to refill. Repeat this step two more times. Once you have emptied three tanks of water, close all faucets and refill for regular use.

Care

To clean the system manifold and tank, wipe exterior with a damp cloth. Do not use any strong or abrasive cleaning agent or solvent cleaner.

NOTICE – Safeguards: If you are experiencing a tubing connection leak, shut off COLD water, disconnect and re-set the tube.

Do not use with water that is microbiologically unsafe or of unknown quality without adequate disinfection before or after the system.

Conforms to NSF/ANSI 58 for pentavalent arsenic reduction. See Performance Data Sheet and Arsenic Facts section for an explanation of reduction performance.

Systems certified for cyst reduction may be used on disinfect waters that may contain filterable cysts.

