



**Protect your investment and save money
with our Water for Life program.**



**Extended
Warranty**



**Discounted
Replacements**



**Free
Shipping**



**No
Contract**

CONTACT US TO LEARN MORE 866-275-2319

waterforlife@aquasana.com



The recommended replacement frequency for the AQ-SFRO-REMIN is every 6 months. Use only certified, genuine AquaSana replacement filters for continued contaminant removal and system performance.



For the full list of contaminants filtered, scan to view the Performance Data Sheet on AquaSana.com.

AquaSana, Inc.
4343 S. Hamilton Road
Groveport, OH 43125
866-662-6885 USA
877-332-7873 Canada
www.aquasana.com

100368974



AQ-SFRO-REMIN

Under Sink Water Filter

**SmartFlow® Reverse Osmosis
Remineralizer**

REPLACEMENT

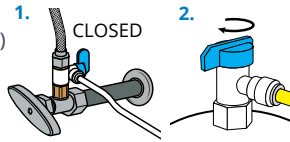
Owner's Manual

For use with AQ-SFRO

INSTALLATION STEPS

Prepare for Installation

- 1 **Turn the inlet tee valve** to the CLOSED position (1) and close the water tank valve (2). Release pressure from system by turning on dedicated faucet until water stops flowing. Once water stops flowing from then dedicated faucet, turn the faucet off.



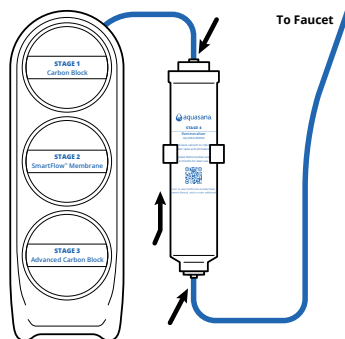
WARNING: Failure to release pressure can result in permanent system damage.

- 2 **Unbox Remineralizer** replacement and remove plastic.
- 3 **Remove blue tubing from Remineralizer** by pushing in the quick connect and pulling tubing out. Slide Remineralizer out of the bracket and discard entire cartridge.



Reconnect Remineralizer

- 4 **Place new Remineralizer** into the bracket with the label text facing upward.
- 5 **Connect blue tubing** from system manifold to the top port of the Remineralizer. Then, connect blue tubing from dedicated faucet to the bottom port of the Remineralizer.



Flush and Check for Leaks

NOTE: Do not drink flushed water.

- 6 **Open dedicated faucet and tank valve.** Wait for water to stop flowing and then turn off dedicated faucet.
- 7 **Turn on cold water valve** and allow storage tank to fill with water.

NOTE: It will take 1-3 hours for the water tank to refill.

- 8 **Once the water tank is full again,** turn on the dedicated faucet to empty tank. After the tank is empty, turn off the faucet and allow tank to refill. Repeat this step 2 more times. Once the tank has refilled for the fourth time, the system is ready to use. While tank refills, carefully inspect for leaks.

NOTICE – Safeguards: If you are experiencing a tubing connection leak, shut off COLD water, disconnect and re-set the tube.

Do not use with water that is microbiologically unsafe or of unknown quality without adequate disinfection before or after the system.

Scan to view the SmartFlow® Reverse Osmosis Remineralizer replacement video.

